



**E.H. WACHS®**  
Superior Equipment. Complete Support.™

# Weld Crown Removal Module

For DynaPrep MDSF



## DynaPrep MDSF SPLIT FRAME ACCESSORY

### DESCRIPTION

E.H. Wachs WCR Weld Crown Removal module for the DynaPrep MDSF provides a low clearance solution for removing pipe weld crowns, in the field or fab shop. This module attaches to the DynaPrep MDSF Split Frame without any modifications needed. The WCR module advances the tooling axially as the MDSF, serving as the drive platform, rotates radially.

With a 3.75in ((95mm) tooling stroke and a 2.5in (63mm) slide mounting stroke, the WCR offers up to a total of 6.25in (158mm) of axial stroke, large enough for even the widest weld crown. The module can be positioned radially at any of six mounting positions, giving a radial mounting range of 3in (76mm) for maximum versatility.

### ADVANCED FEATURES

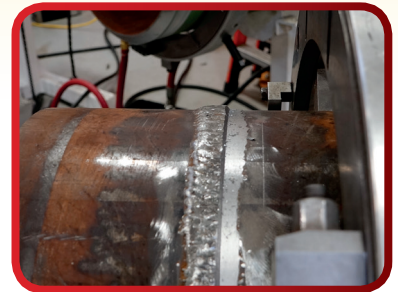
The WCR is built tough to handle extreme machining forces, even at its full stroke extension. Easy and fast to setup and operate, it requires only the same two hand tools as the MDSF. It's designed to accept standard Wachs DuoEdge tooling that offers a low cost per cut due to its long life multi-edge tooling inserts.

The WCR tooling insert holder offers two different mounting locations for maximum versatility. The WCR features Rapid Adjust to manually advance or retract the cutting head, and uses the MDSF standard trip and starwheel advance that requires no indexing.

### WELD CROWN REMOVAL

Weld crown removal is the process of removing the raised weld crown flush with the pipe surface to meet specific requirements. In Power Generation and other industries weld crowns may require machining to meet in service inspection regulations, or surface finish and profile requirements. In Pipeline applications, the weld crown may need to be removed for procedures like clamp installation.

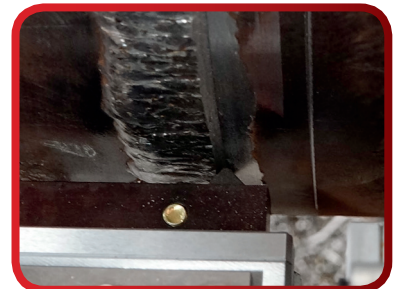
E.H. Wachs WCR Weld Crown Removal module for the DynaPrep MDSF uses a safe, cold-cutting machining process that does not create heat or sparks. It precisely removes the raised weld crown while preserving the native pipe material and weld integrity, leaving a smooth, machined finish ready for inspection or further processing that does not require further hand working.



WCR Module uses cold cutting to remove weld crown without hand grinding



The WCR Rapid Adjust feature speeds setup and operation



Machines crown without sacrificing parent pipe material or weld integrity



**E.H. WACHS®**  
Superior Equipment. Complete Support.™

# Weld Crown Removal Module

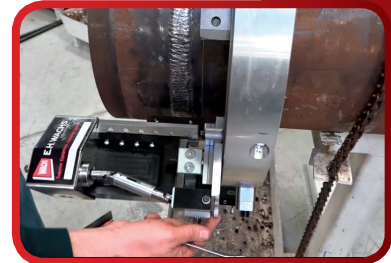
For DynaPrep MDSF

## STANDARD FEATURES

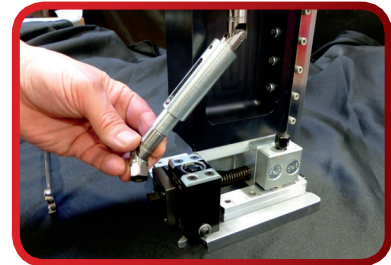
- Machines Weld Crowns up to 6.25in Wide
- Mounts without Modifications to MDSF
- Easy Setup and Operation
- Rapid Adjust Axially and Radially
- Utilizes Standard DuoEdge Insert Tooling
- Rugged Construction for Rigidity and Durability
- Includes Heavy Duty Storage Case

## SPECIFICATIONS:

- Radial Slide Mounting Positions: 6
- Radial Slide Mounting Range: 3"
- Radial Slide Screw Travel: 1.5"
- Total Radial Positioning: 4.5"
- Axial Slide Travel: 3.75"
- Axial Slide Feed Rate: .003" Per Trip
- Axial Tool Repositioning: 2.5"
- Total Axial Coverage: 6.25"



WCR mounts to MDSF without modification, uses starwheel advance



Telescoping drive allows for large radial and axial tool travel



WCR module uses MDSF two hand tools for setup and operation

**CONTACT YOUR WACHS REPRESENTATIVE FOR ADDITIONAL INFORMATION**



**E-mail:** info@ehwachs.com  
**Telephone:** +1.847.537.8800  
**Fax:** +1.847.520.1147  
**Visit our website:** ehwachs.com

**E.H. Wachs**  
600 Knightsbridge Parkway  
Lincolnshire, Illinois 60069

